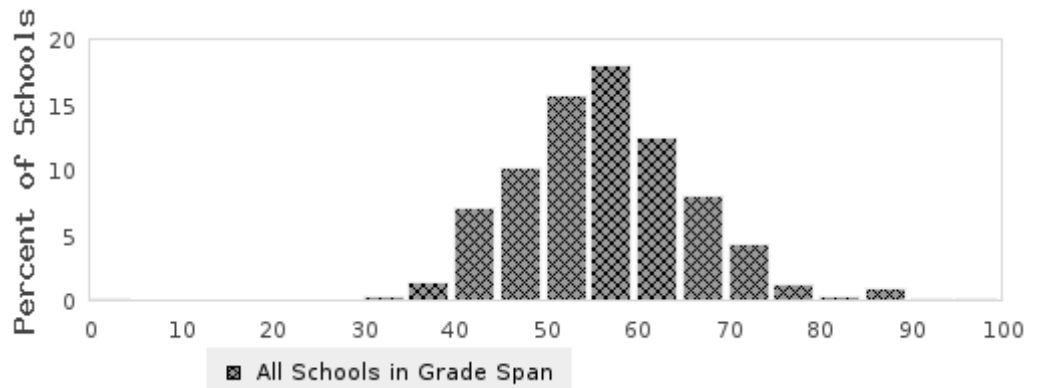


DRAFT 2017 ESSA School Index: School Quality and Student Success (SQSS)

**8888001 - Fake Elementary School
8888000 - Fake School District**

**Overall SQSS Indicator
Score**
74.05

State Distribution of School-Level Overall SQSS Scores



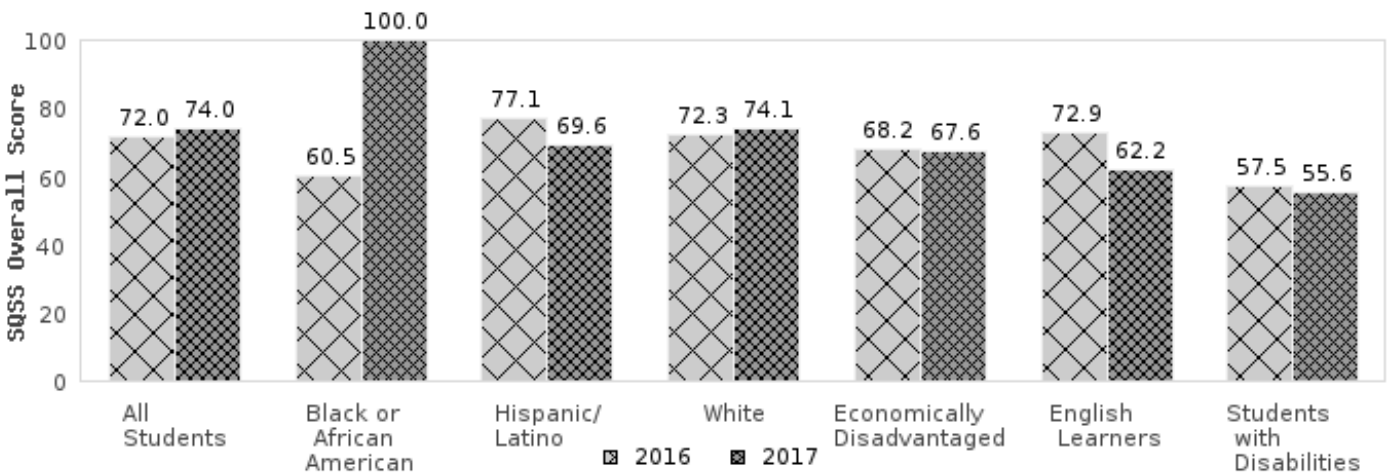
The score of 74.05 falls in the 70-75 bar of the state distribution of the overall SQSS scores for the elementary level grade span.

The School Quality and Student Success (SQSS) indicator combines measures of engagement, access, readiness, completion, and success criteria. Each measure focuses on the extent to which students are meeting important educational milestones (such as reading proficiently), important readiness criteria (minimum ACT score of 19 for Arkansas Academic Challenge Scholarship), and important postsecondary success indicators (attainment of AP, IB, concurrent credits).

Overall SQSS Points Table

Total Students	Total # Points Possible	Total # Points Earned
520	792	586.5
Score: (586.5/792) * 100 = 74.05		

SQSS Overall Indicator Score by Subgroup



DRAFT 2017 ESSA School Index: School Quality and Student Success Components

Student Engagement: Chronic Absence	Student-level chronic absence and associated risk level are used as a proxy for student engagement. Student absenteeism over 10% of days enrolled is considered chronic absence and high risk. Chronic absence is calculated for students in Grades K - 11 for each school. Grades included for this school are based on the school's actual grade range.
Reading at grade level	Reading at grade level is calculated for students in Grades 3 - 10 for each school. Grades included for this school are based on the school's actual grade range (ACT Aspire and MSAA scores are included). Highly mobile students are excluded.
Science achievement	Science achievement is calculated for students in Grades 3 - 10 for each school. Grades included for this school are based on the school's actual grade range (ACT Aspire and MSAA scores are included). Highly mobile students are excluded.
Growth in science achievement	Growth in science achievement is calculated for students in Grades 4 - 10 who have at least two science scores on ACT Aspire. Grades included for this school are based on the school's actual grade range. For each grade level, students' value-added science growth scores are ranked, and the student's percentile rank of his/her value-added science growth score is used in the calculation. Highly mobile students are excluded.
On-time credits	Students' on-time credits are calculated for students in Grades 9 - 11 for each school. Grades included for this school are based on the school's actual grade range. Highly mobile students are excluded.
GPA 2.8 or higher on 4.0 Scale	High School GPA calculation includes students in Grade 12 in cycle 7 certified data with High School GPA. Highly mobile students are excluded.
ACT Composite	The ACT Composite includes students in Grade 12 in cycle 7 certified data with ACT scores. Highly mobile students are excluded.
ACT College Readiness	The ACT College Readiness calculation includes students in Grade 12 in cycle 7 certified data with ACT scores. Highly mobile students are excluded.
AP/IB/Concurrent Credit	The AP/IB/Concurrent Credits calculation includes students in Grade 12 in cycle 7 certified data with course credit records from any of grades 9 - 12. Highly mobile students are excluded.
Computer Science Credits	The Computer Science Credit calculation includes students in Grade 12 in cycle 7 certified data with course credit records from any of grades 9 - 12. Highly mobile students are excluded.
Service Learning Credits	The Service Learning Credit calculation includes students in Grade 12 in cycle 7 certified data with course credit records from any of grades 9 - 12. Highly mobile students are excluded.

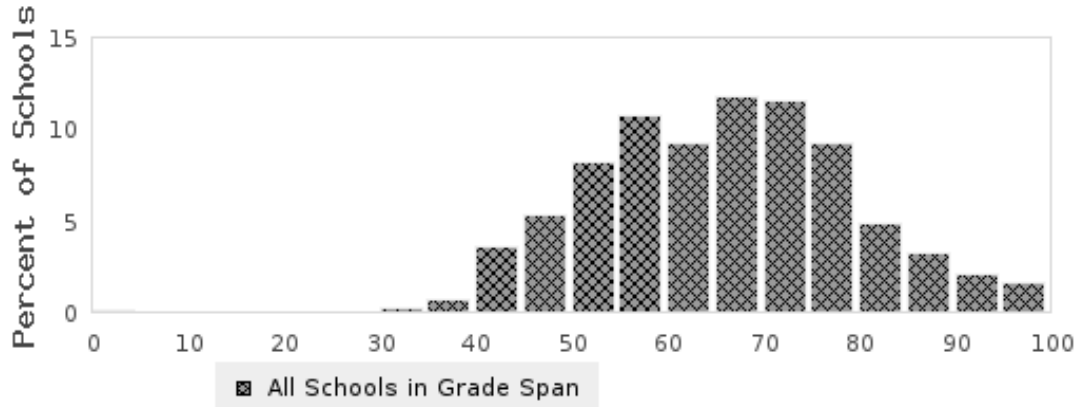
Note: Concurrent Credit Courses include ACE Concurrent Credits and other Concurrent Credit Courses

DRAFT 2017 SQSS: Student Engagement

Student Engagement
Score

83.94

State Distribution of School-Level Student Engagement Scores

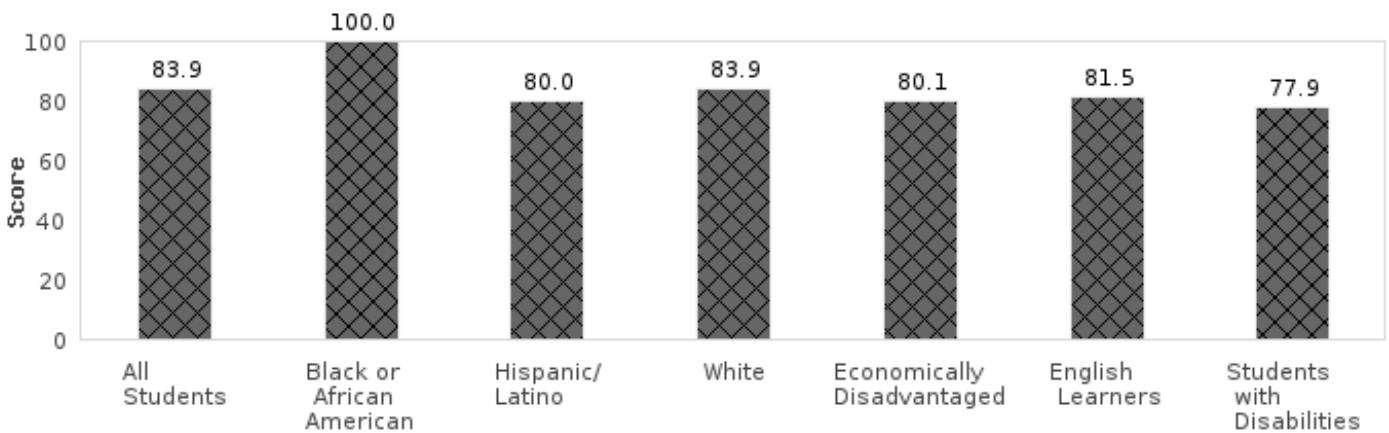


The score of 83.94 falls in the 80-85 bar of the state distribution of the student engagement scores for the elementary level grade span.

Student Engagement Points Table

Score: $(436.5/520) * 100 = 83.94$	
Total Students	520
Total # Points Possible	520
Total # Points Earned	436.5
Points Per student	
Student at low risk (absent less than 5% of time enrolled)	1.0 Point
Student at moderate risk (absent 5% to less than 10% of days enrolled)	0.5 Point
Student at high risk (absent 10% or more of days enrolled)	0.0 Point

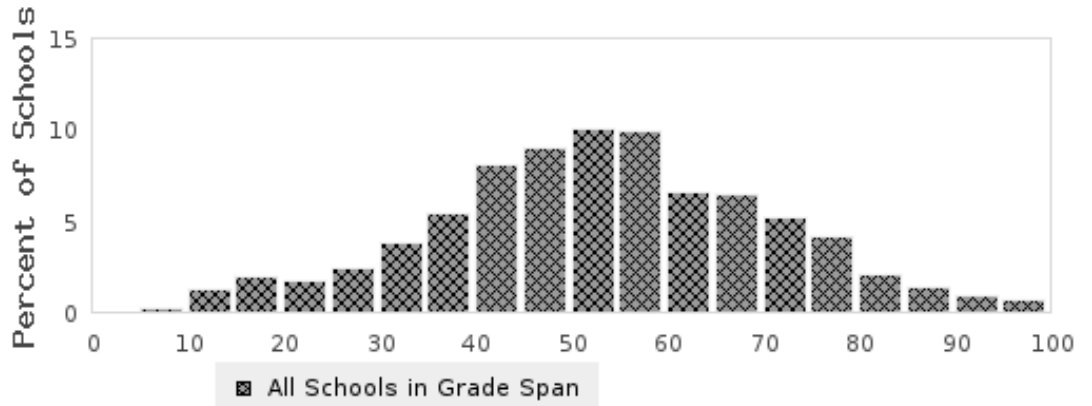
Percent of Points Earned for Student Engagement



DRAFT 2017 SQSS: Reading at Grade Level

Reading at Grade
Level Score
52.94

State Distribution of Schools' Percent of Points Earned for Reading Achievement

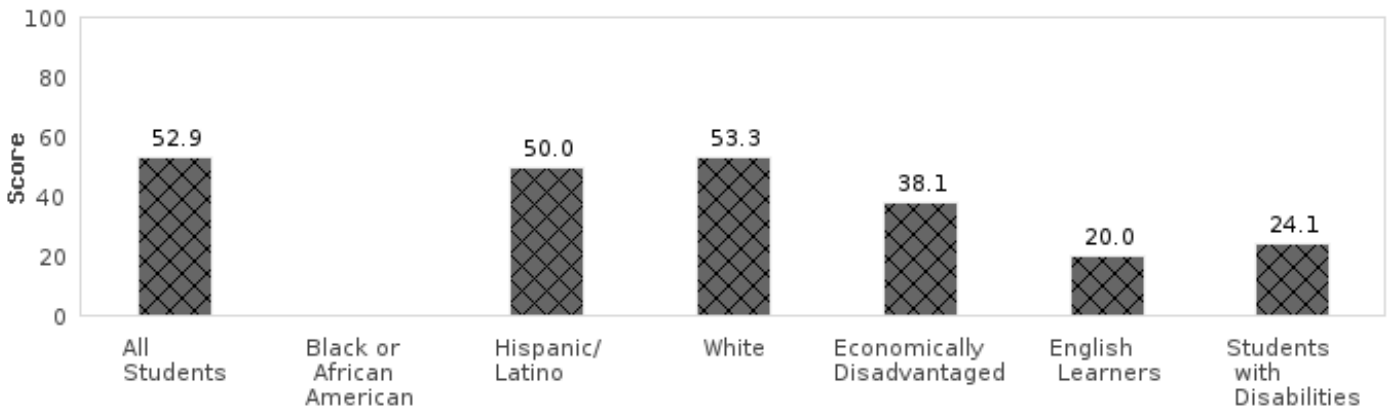


The score of 52.94 falls in the 50-55 bar of the state distribution of the reading at grade level scores for the elementary level grade span.

Reading at Grade Level Points Table

Score: $(72/136) * 100 = 52.94$	
Total Students	136
Total # Points Possible	136
Total # Points Earned	72
Points Per Student	
Student achieved Ready or Exceeds (ACT Aspire) in reading	1.0 Point
Student achieved Level 3 or Level 4 (MSAA) in reading	1.0 Point
Students achieved below grade level	0.0 Point

Percent of Points Earned Per Student for Reading at Grade Level

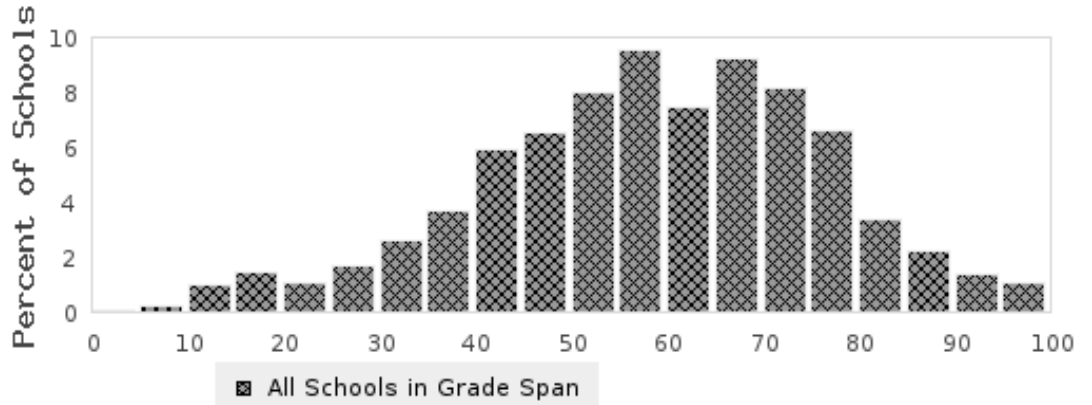


DRAFT 2017 SQSS: Science Achievement

Science Achievement
Score

57.35

State Distribution of Schools' Percent of Points Earned for Science Achievement



The score of 57.35 falls in the 55-60 bar of the state distribution of the science achievement scores for the elementary level grade span.

Science Achievement Points Table

Score: $(78/136) * 100 = 57.35$	
Total Students	136
Total # Points Possible	136
Total # Points Earned	78
Points Per Student	
Student achieved Ready or Exceeds (ACT Aspire) in science	1.0 Point
Student achieved Level 4 (Functional Independence) or 5 (Independent) (AAPA) in science	1.0 Point
Students achieved below grade level	0.0 Point

Percent of Points Earned Per Student for Science Achievement

