

**DRAFT 2017 ESSA School Index: School Value-Added Growth**

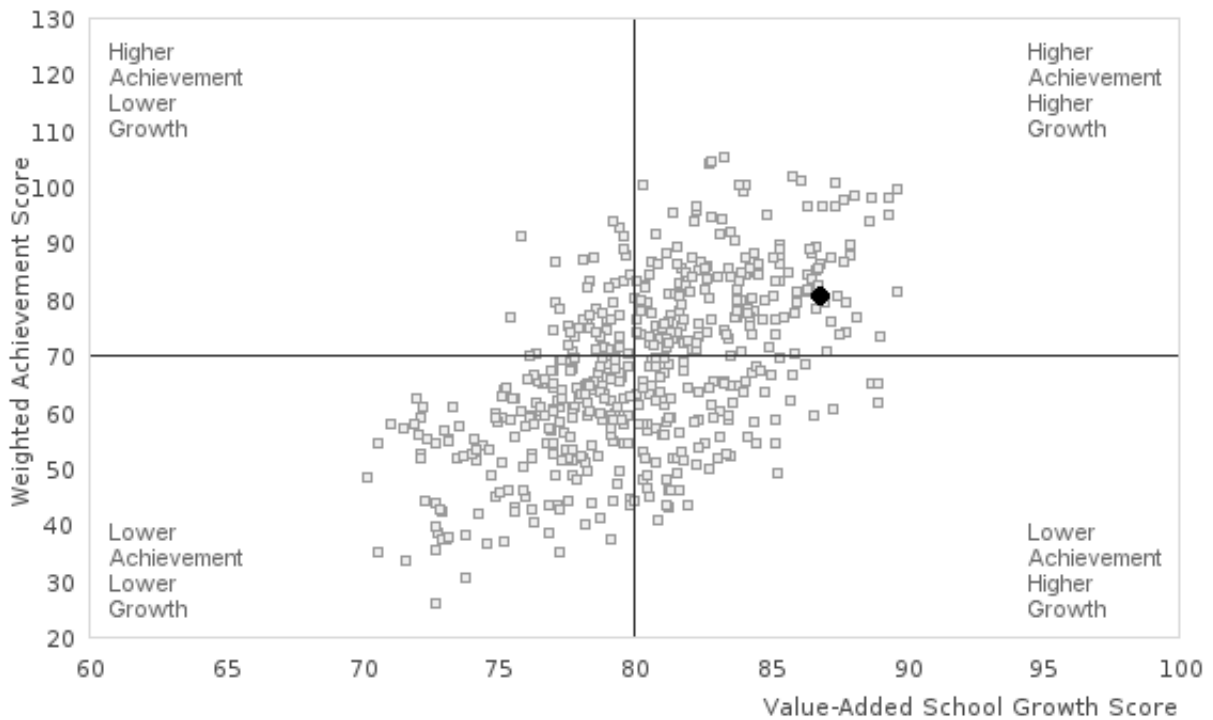
**8888001 - Fake Elementary School  
8888000 - Fake School District**

**Value-Added Growth  
Score**

**86.8**

The school growth score is based on a value-added growth model. This scatterplot shows how schools' average Value-added Growth Scores relate to schools' Weighted Achievement scores in their grade span. The value-added score of 80 represents students meeting expected growth, on average.

**School Value-Added Growth Score Plotted with Weighted Achievement Scores**



- All Schools in Grade Span
- ◆ Fake Elementary School

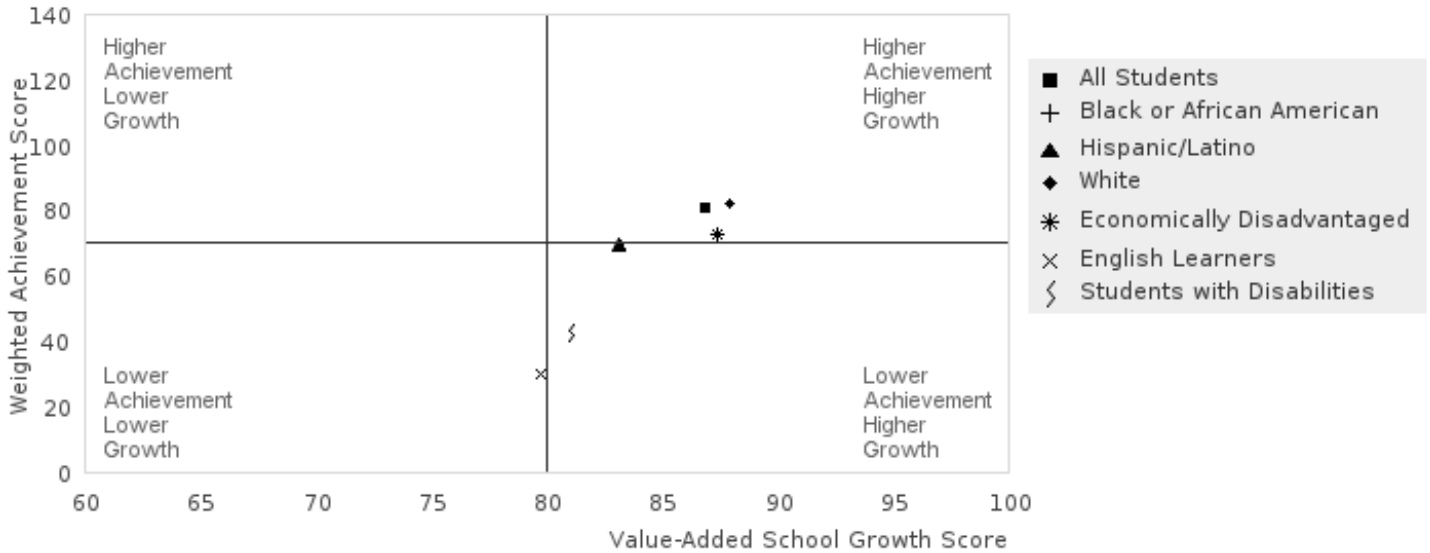
**School Content Value-Added Growth (VAS)**

	School Value-Added Growth Score	Content Growth Score	ELP Growth Score	ELA Value-Added Score	Math Value-Added Score
Score	86.8	88.16	78.99	82.45	93.65
Number of Students	155	132	23	132	132

**DRAFT** 2017 ESSA School Index: School Value-Added Growth

**8888001 - Fake Elementary School**  
**8888000 - Fake School District**

School Value-added Growth Score Plotted with Weighted Achievement for Subgroups



School Value-added Growth Score for Subgroups

Subgroup	Value-added Growth Score	Number of Students
All Students	86.8	155
Black or African American		0
Hispanic/Latino	83.11	31
White	87.9	120
Economically Disadvantaged	87.4	66
English Learners	79.72	28
Students with Disabilities	81.08	32

Counts for Content Area Growth (Math + ELA)

Subgroup	# ELA Growth	# Math Growth	Total Number of Students Combined Growth*
All Students	132	132	132
Black or African American	0	0	0
Hispanic/Latino	12	12	12
White	118	118	118
Economically Disadvantaged	62	62	62
English Learners	5	5	5
Students with Disabilities	28	28	28

\* Each student is counted once for content growth. Some students have both Math and ELA. Some students have only one subject; therefore, the total number is not always the sum of #ELA Growth and #Math Growth.