

**DRAFT 2017 ESSA School Index: Adjusted Cohort Graduation Rates**

**8888004 - Fake High School**  
**8888000 - Fake School District**

**4-Year Graduation Rate**

**94.64**

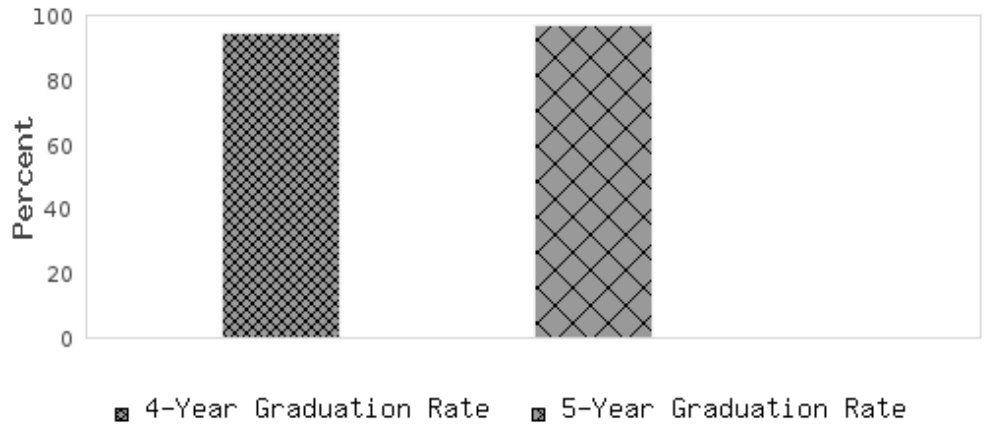
Adjusted cohort for 2013 to 2016

**5-Year Graduation Rate**

**97.09**

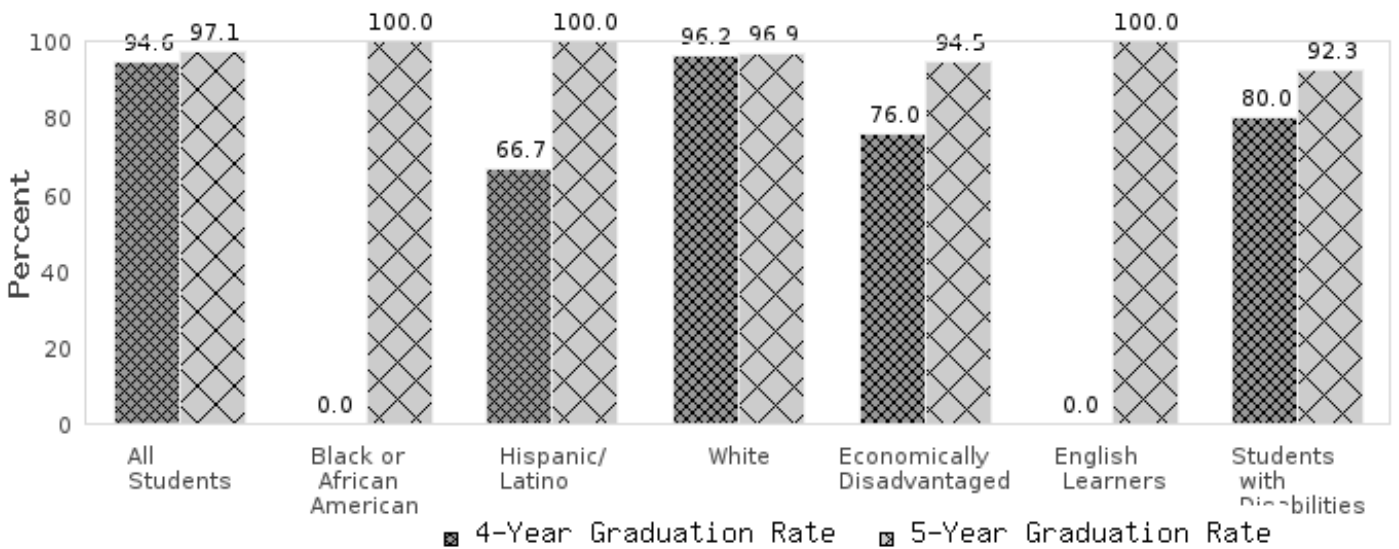
Adjusted cohort for 2012 to 2016

**2016 4-Year and 5-Year Adjusted Cohort Graduation Rates**



Graduation Rates used in the ESSA School Index are lagged one year.

**2016 Adjusted Cohort Graduation Rates By Subgroup**



**Table of Actual & Expected Graduates**

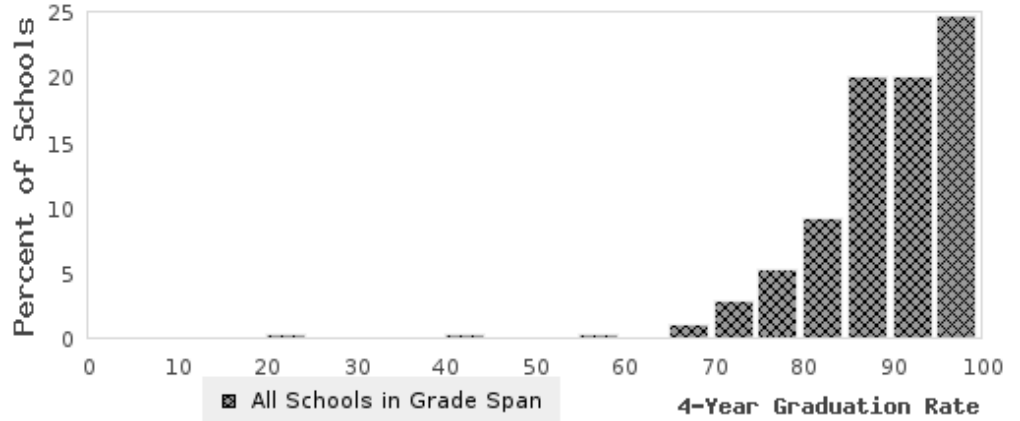
Subgroup	# Expected Graduates: 4-year	# Actual Graduates: 4-year	# Expected Graduates: 5-year	# Actual Graduates: 5-year
All Students	112	106	103	100
Black or African American	1	0	1	1
Hispanic/Latino	3	2	3	3
White	105	101	97	94
Economically Disadvantaged	25	19	55	52
English Learners	1	0	2	2
Students with Disabilities	5	4	13	12

**DRAFT 2017 ESSA School Index: Adjusted Cohort Graduation Rates**

**8888004 - Fake High School**  
8888000 - Fake School District

**2016 State Distribution of School Four-Year Adjusted Cohort Graduation Rates**

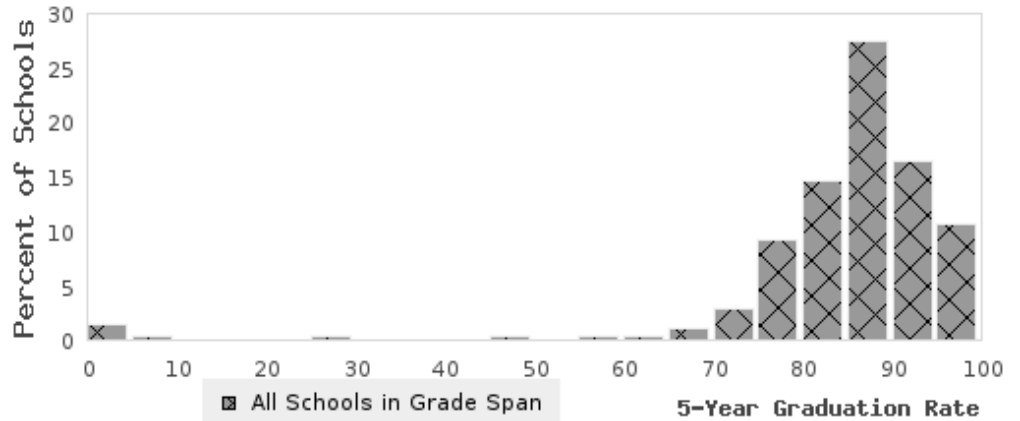
4-Year Graduation Rate  
**94.64**



The score of 94.64 falls in the 90-95 bar of the state distribution of the four-year adjusted cohort graduation rates for the high school level grade span.

**2016 State Distribution of School Five-Year Adjusted Cohort Graduation Rates**

5-Year Graduation Rate  
**97.09**



The score of 97.09 falls in the 95-100 bar of the state distribution of the five-year adjusted cohort graduation rates for the high school level grade span.